



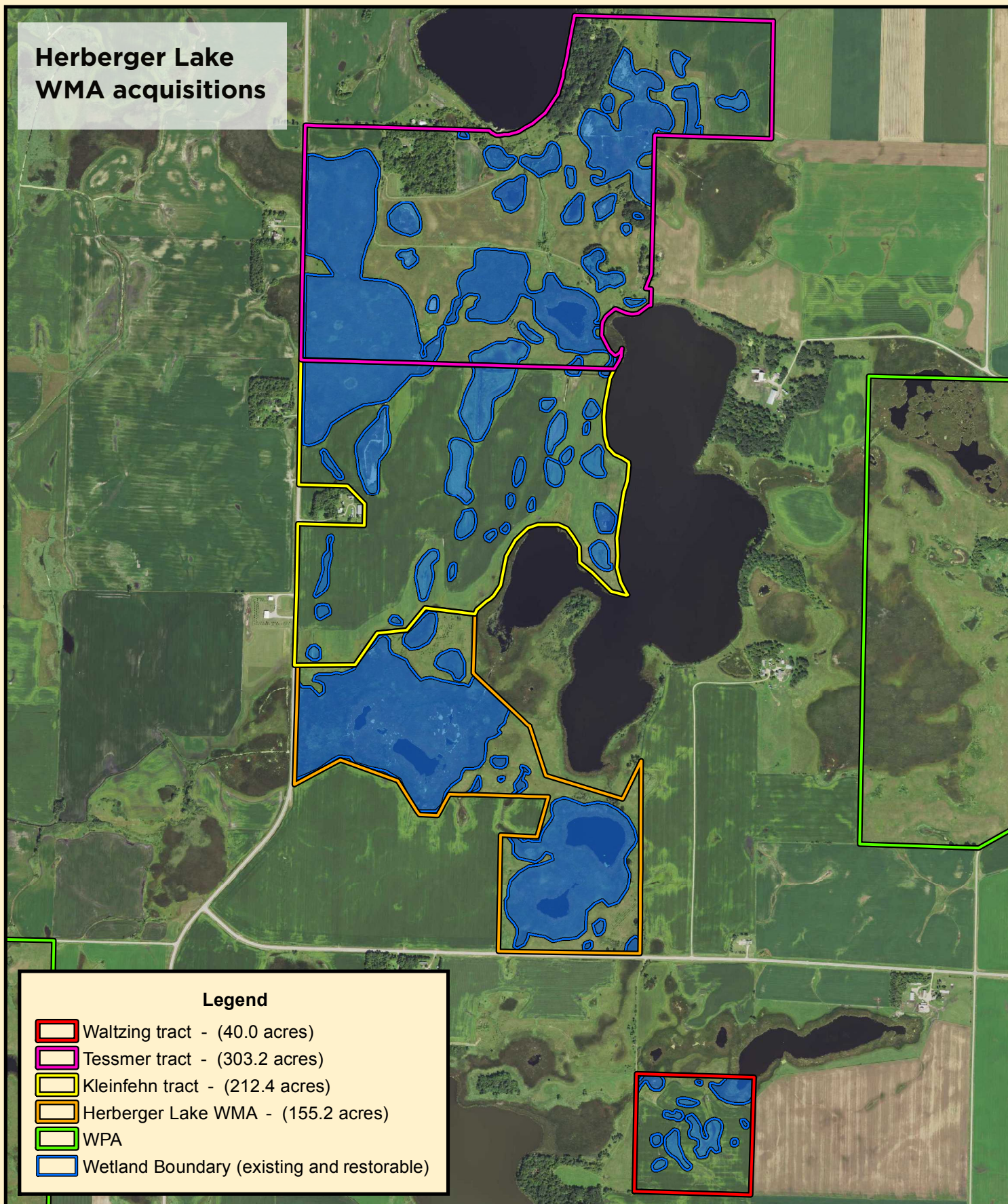
HRE07: Sauk River Watershed Habitat Protection & Restoration, Phase 3









Restoration on the Klehr Complex is currently occurring in this area. Activities include removal of invasive cedar and Siberian elm trees across 65 acres of existing prairie and oak savanna on three contiguous easement parcels. This will be followed by a prescribed burn in Spring 2021.



Herberger Lake WMA acquisitions

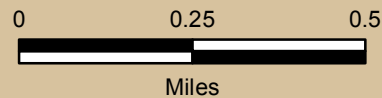


Legend

-  Waltzing tract - (40.0 acres)
-  Tessmer tract - (303.2 acres)
-  Kleinfehn tract - (212.4 acres)
-  Herberger Lake WMA - (155.2 acres)
-  WPA
-  Wetland Boundary (existing and restorable)



**Orange Township
Sec. 12, 13, 24, 25
Douglas County**



HRE07: Sauk River Watershed Habitat Protection & Restoration, Phase 3

Results to Date through 8/20/2020



Grant Phase	Total Budget		Protection							Restore/Enhance		
			Leverage			Acres Protected			Projects	Acres Restored/Enhanced		
	Award	Spent	Proposed	Actual	% of Goal	Proposed	Outcome	% of Goal		Proposed	Outcome	% of Goal
2019 Phase 1 (In Progress)	\$ 2,946,000	\$ 1,127,554	\$ 293,600	\$ 956,170	326%	720	525	73%	6	220	65	30%
2020 Phase 2 (In Progress)	\$ 3,926,000	\$ -	\$ 249,200	\$ -	0%	420	0	0%	0	0	0	
2021 Phase 3 (Proposed)	\$ 8,879,800	\$ -	\$ 790,000	\$ -	0%	0	0		0	0	0	

Program Totals	Total Budget		Protection							Restoration		
			Leverage			Acres Protected			Projects	Acres Restored		
	Award	Spent	Proposed	Actual	% of Goal	Proposed	Outcome	% of Goal		Proposed	Outcome	% of Goal
Complete	\$ -	\$ -	\$ -	\$ -		0	0		0	0		
In Progress	\$ 6,872,000	\$ 1,127,554	\$ 542,800	\$ 956,170	176%	1140	525	46%	6	220	65	30%
Totals Across All Grants	\$ 6,872,000	\$ 1,127,554	\$ 542,800	\$ 956,170	176%	1,140	525	46%	6	220	65	30%

Results-to-Date Table

For each grant program with a history of work, the partnership has produced a table showing a snapshot of what has been achieved to date. Within each program table, each associated grant is listed as a row along with its status (**Completed shown in yellow**, **In Progress shown in green**, or **Proposed shown in pink**) and pertinent information related to expenditure of grant funds. A table summarizing results across all grants appears at the bottom of the table.

The following text is intended to clarify for the user the information contained within respective components of the table.

Total Budget

Details the total amount awarded and spent to date for each grant.

- **Award:** The amount awarded to the partnership through the grant.
- **Spent:** The amount spent to date based upon the most recent ledger info.

Protection

All figures shown below are based upon project results. Leverage is calculated based solely upon the purchase price of individual projects.

Project Leverage

- **Proposed:** Leverage amount proposed in the most recent approved accomplishment plan. If no leverage amount was proposed, the cell is blank.
- **Actual:** The total leverage amount realized for completed projects. Leverage for a given project is calculated based on the difference between the appraised value of the easement and the amount paid.
- **% of Goal:** If an amount of leverage was proposed, how much leverage has been realized as compared to the goal in the most recent approved accomplishment plan.

Acres Protected

- **Proposed:** The number of acres proposed to be protected in the most recent approved accomplishment plan.
- **Outcome:** The total number of acres protected through completed projects to date.
- **% of Goal:** How many acres have been protected as compared to the goal in the most recent approved accomplishment plan.

Restore/Enhance

All figures shown are combined figures for restoration and enhancement.

- **Proposed:** The number of acres proposed to be restored and enhanced in the most recent approved accomplishment plan.
- **Actual:** Acres of completed restoration/enhancement.
- **% of Goal:** If restoration and enhancement was included in the grant, how much has been accomplished as compared to the goal in the most recent approved accomplishment plan.